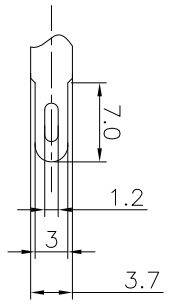
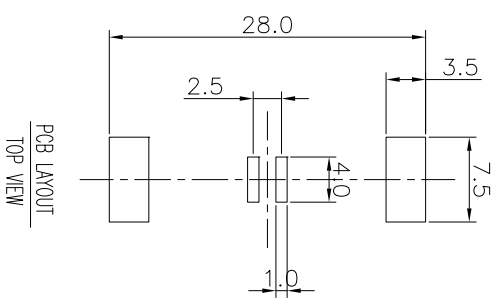
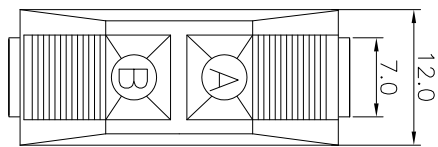
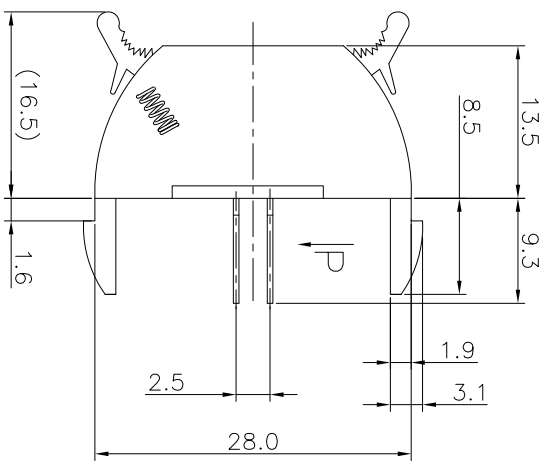




|        |         |               |          |
|--------|---------|---------------|----------|
| REV. A | ECN NO. | MODIFIED MARK | APPROVED |
|        |         | FIRST RELEASE |          |



NOTES:  
 ELECTRICAL:  
 1:RATED CURRENT: 3A Max.  
 2:RATED VOLTAGE: 50V AC.  
 3:INSULATION RESISTANCE: 100 MEGAOHMS Min.  
 4:DIELECTRIC WITHSTANDING VOLTAGE: 1200 VAC Min.  
 MECHANICAL:  
 1:WIRE IN HOLD FORCE 5N (20#WIRE) MIN  
 2:INSPECIED VOLTAGE, AT THE SPEED OF 6-10S PER MINUTES, THE SAMPLES ARE INSPECTED 10000 CYCLES, BUT THERE ARE NO DAMAGE ON THE PRESSURE AND THE RISING TEMPERATURE, ETC.3:APPLY 2kgf FORCE AT ANY DIRECTION , THERE NO LOOSE & NO CRACK

|   |      |                           |  |
|---|------|---------------------------|--|
| ANGLE   | ±5°  | MODEL NAME: WP2-4         | <br>广东正宝科技有限公司<br>GUANGDONG TRENPRO TECHNOLOGY CO. LTD. |
| 63 < L  | ±0.5 | (PART NO.)                |  |
| 16 < L ≤ 63   | ±0.4 | DESIGN: X.H.Wang 11/06'18 | TITLE: WP PUSH TERMINAL  |
| 4 < L ≤ 16  | ±0.3 | MAT'L: See table          | CHECKED: L.W.Wu 11/06'18   |
| L ≤ 4   | ±0.2 | FINISH: See table         | DWG NO.:   |
| TOL TABLE:  |      | Q'TY: /                   | APPROVED: X.Q.Hu 11/06'18  |
| THIS DOCUMENT IS THE PROPERTY OF TRENPRO TECHNOLOGY CO., LTD. NO PART THEREOF MAY BE REPRODUCED AND USED WITHOUT THE PRIOR WRITTEN CONSENT OF THE OWNER |      | UNIT: mm                  | VIEW:   |
|   |      | SCALE: 5:1                | SHEET: 1/1   |
|   |      | SIZE: A3                  | REV.: A  |